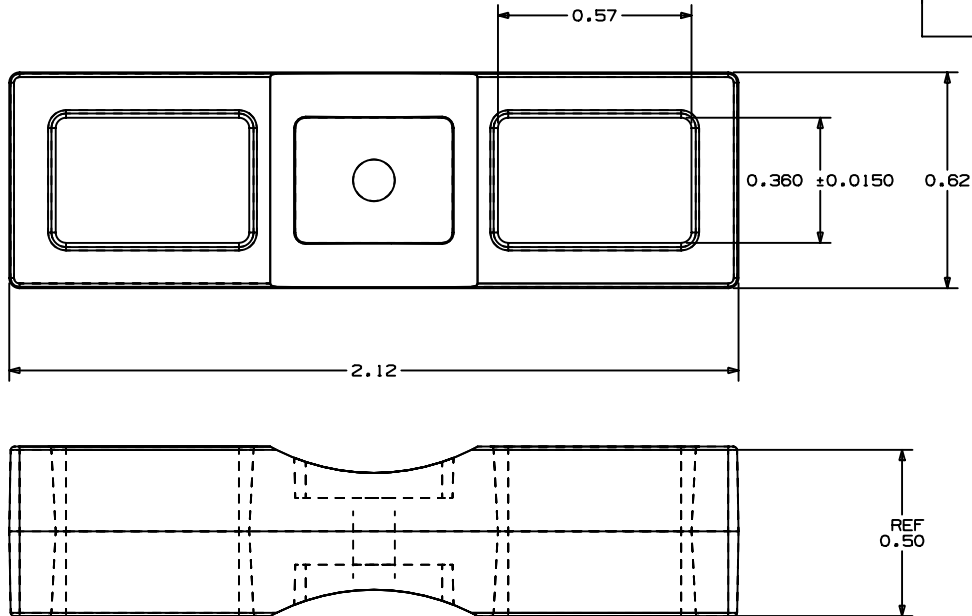


THIS COPY IS PROVIDED ON A RESTRICTED BASIS AND IS NOT TO BE USED IN ANY WAY DETRIMENTAL TO THE INTERESTS OF PANDUIT CORP.

PANDUIT PART NUMBER*	WEIGHT lbs/100 pcs (g)/100 pcs	USE WITH ANY OF THESE CABLE TIES
CSH-	1.52 (690)	S,H



NOTES:

- \*1. SEE CURRENT PRICE SHEET FOR PART NUMBER SUFFIX DESIGNATION FOR PACKAGE SIZE.
- 2. CABLE TIE CROSS-SECTION CODE  
S-STANDARD  
H-HEAVY
- 3. MATERIAL -20 PIGMENTED BLACK  
-0 WEATHER RESISTANT BLACK

DIMENSIONS IN BRACKETS ARE METRIC [ mm ]

CAD FILENAME/LAYERS

G00239ES\_PB\_CSH\_02.PRT

**PANDUIT**

CORP. TINLEY PARK, ILLINOIS

CSH CABLE SPACER

UNLESS OTHERWISE SPECIFIED,  
DIMENSIONAL TOLERANCES ARE:  
(.X) ±0.05 (1.3) (.XXX) ±0.010 (0.25)  
(.XX) ±0.02 (0.5) ANGLES ± 5°

UNLESS OTHERWISE SPECIFIED,  
ALL DIMENSIONS ARE GIVEN  
IN INCHES, THIRD ANGLE PROJECTION.

DRAWN BY CGSM

MAT'L:

SCALE FULL

DATE 1/23/97

NYLON 6/6

DRAWING NO.

GB0239ES

DWG  
A  
SIZE

CHK'D

REV	DATE	BY	CHK	DESCRIPTION	ECN	R	CUST	SUP
2	06/18/01	LGG		UPDATED FOR WEB (ADDED "REF")	GB0239ES	2		
1	10-20-97	JAD		REVISED GEOMETRY TO REFLECT CORRECT GEOMETRICAL CONFIGURATION	GB0239ES	1		
R	1/23/97	CGSM		INITIAL RELEASE	GB0239ES	R		